



**WELLS
CARGO®**

ROAD FORCE® V-FRONT AUTO THE SMART CHOICE

BEYOND THE STANDARD

Unlike the other models in the Road Force® line-up, the 8.5' wide V-front is an auto hauler at heart. If you're a collector or racer looking for superior quality, durability and style, then the 8.5' wide Road Force® V-front is a smart choice. For starters, the Road Force® features a bonded exterior, an extra wide 94" rear ramp door opening, no-show beavertail, side entry door with recessed step, sidewall vents and tie-down rings - all standard. Factor in the radial tires, LED slim line tail lights, ArmorTech™ Covered A-Frame and a 3-year limited warranty; now you know you've got a trailer that's packed with value and built to last!



Trailers shown may feature optional equipment available at an additional charge.

ROAD FORCE®



SPECIFICATIONS

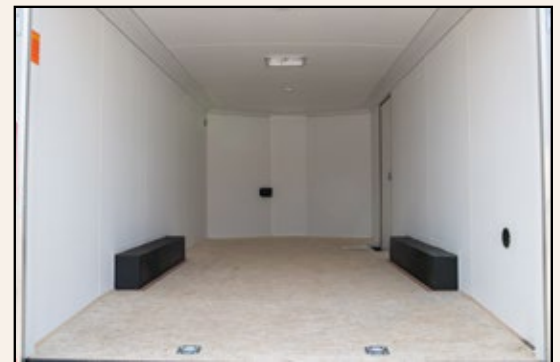
ROAD FORCE®



	RFV851GT2	RFV8520T2	RFV8524T2	RFV8528T3
Body:				
Length	17' 10"	20' 9"	24' 9"	29' 10"
Width	8' 4"	8' 4"	8' 4"	8' 4"
Overall:				
Length	19' 6"	23' 6"	27' 6"	31' 6"
Width	8' 6"	8' 6"	8' 6"	8' 6"
Height	8' 7"	8' 7"	8' 7"	8' 7"
Interior:				
Length (Includes "V")	17' 6"	21' 6"	25' 6"	29' 6"
Width	8' 0"	8' 0"	8' 0"	8' 0"
Height	6' 7"	6' 7"	6' 7"	6' 6"
Platform Height at Beavertail	17"	17"	17"	18"
Spring Suspension E-Z Lube® Axles: Qty Total Axle Capacity	Tandem 7,000 lbs.	Tandem 7,000 lbs.	Tandem 7,000 lbs.	Tandem 10,400 lbs.
Brakes with Breakaway Kit	Electric Drum	Electric Drum	Electric Drum	Electric Drum
Radial Tire Size Tire Load Range	ST205/75R15 C	ST205/75R15 C	ST205/75R15 C	ST225/75R15 D
Hitch Ball Size	2-5/16"	2-5/16"	2-5/16"	2-5/16"
Hitch Height to Top of Ball	20"	20"	20"	21"
Hitch Weight (% of Curb Weight)	10% to 15%	10% to 15%	10% to 15%	10% to 15%
Curb Weight (Approximate)	2,580 lbs.	3,220 lbs.	3,860 lbs.	4,680 lbs.
GVWR	7,000 lbs.	7,000 lbs.	7,000 lbs.	9,990 lbs.
Payload Capacity (Approximate)	4,420 lbs.	3,780 lbs.	3,140 lbs.	5,310 lbs.
Rear Ramp Door Opening - Width x Height	94" X 75"	94" X 75"	94" X 75"	94" X 75"
12V Male Connection	7-way	7-way	7-way	7-way
Beavertail	24"	48"	48"	48"

STANDARD FEATURES

- Exclusive Bull Nose Profile
- Silver Spoke Wheels with 15" Radial Tires
- Smooth Aluminum Fenderettes
- .030 Aluminum Exterior
- .080 Aluminum Top Wrap
- 1-Piece Aluminum Roof
- 12v LED Slim Line Tail Lights
- 12v LED Heavy-Duty Oval Clearance Lights
- 24" ATP Stoneguard
- Flow-Thru Sidewall Vents
- Rear Ramp Door with Spring Assist
- 16" Ramp Extension
- 36" Side Entry Door with Flush Lock
- Recessed Step at Side Door
- 12v LED Dome Light with Wall Switch (2)
- 3/4" PlexCore™ Decking
- 3/8" PlexCore™ Sidewall Liner
- 5,000 lb. Square D-Rings with Welded Plate (4)
- Spring Axles with E-Z Lube® Hubs
- Electric Brakes with Breakaway Kit
- 2" X 6" Tube Main Rails
- Entire Chassis Undercoated
- ArmorTech™ on A-Frame and Rear End Rail
- 16" OC Tube Vertical Posts
- 16" OC Crossmembers
- 16" OC Tube Roof Bows
- 3-Year Limited Warranty



Trailers shown may feature *optional* equipment available at additional cost.



www.wellscargo.com

Specifications, features, options, packages & pricing subject to change **without** notice. See your authorized Wells Cargo® dealer for more information.