

The Wells Cargo logo is a black circle with the words "WELLS" and "CARGO" stacked vertically in white, bold, sans-serif capital letters. It is positioned in the top left corner of the advertisement, partially overlapping a yellow vertical bar.

**WELLS  
CARGO®**

# FASTTRAC® 8.5' WIDE THE ALL PURPOSE TRAILER

## DELUXE EDITION

The standard FastTrac® is already packed with value, but when you upgrade to the Deluxe Edition you get even more bang for your buck. The Deluxe Edition includes rugged, moisture-resistant 3/8" PlexCore™ interior sidewall liner, .030 prefinished aluminum exterior in your choice of 9 different colors and 500 lb. floor rings for securing your cargo.

No matter your hauling needs . . . count on the FastTrac® to deliver your valuables safe and secure to your final destination.



Trailers shown may feature optional equipment available at an additional charge.

**FASTTRAC®**



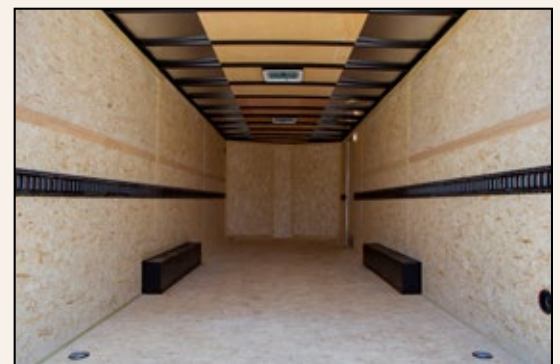
# SPECIFICATIONS

# FAST TRAC

	FT85162-D	FT85202-D	FT85242-D
<b>Body:</b> Length Width	17' 10" 8' 4"	21' 10" 8' 4"	25' 10" 8' 4"
<b>Overall:</b> Length Width Height	19' 6" 8' 6" 8' 5"	23' 6" 8' 6" 8' 5"	27' 6" 8' 6" 8' 5"
<b>Interior:</b> Length Width Height	17' 6" 8' 0" 6' 6"	21' 6" 8' 0" 6' 6"	25' 6" 8' 0" 6' 6"
<b>Width Between Wheel Wells</b>	83.5"	83.5"	83.5"
<b>Platform Height</b>	19"	19"	19"
<b>Spring Suspension E-Z<sup>®</sup> Lube Axles: Qty Total Axle Capacity</b>	Tandem 7,000 lbs.	Tandem 7,000 lbs.	Tandem 7,000 lbs.
<b>Brakes with Breakaway Kit</b>	Electric Drum	Electric Drum	Electric Drum
<b>Radial Tire Size Tire Load Range</b>	ST205/75R15 C	ST205/75R15 C	ST205/75R15 C
<b>Hitch Ball Size</b>	2-5/16"	2-5/16"	2-5/16"
<b>Hitch Height to Top of Ball</b>	20"	20"	20"
<b>Hitch Weight (% of Curb Weight)</b>	10% to 15%	10% to 15%	10% to 15%
<b>Curb Weight (Approximate)</b>	2,800 lbs.	3,100 lbs.	3,500 lbs.
<b>GVWR</b>	7,000 lbs.	7,000 lbs.	7,000 lbs.
<b>Payload Capacity (Approximate)</b>	4,200 lbs.	3,900 lbs.	3,500 lbs.
<b>Rear Ramp Door Opening - Width x Height</b>	91" x 75"	91" x 75"	91" x 75"
<b>12V Male Connection</b>	7-way	7-way	7-way

# STANDARD FEATURES

- 3/8" PlexCore™ Sidewall Liner
- .030 Aluminum Exterior (9 Standard Colors)
- Exclusive Bull Nose Profile
- 15" Radial Tires with Silver Spoke Wheels
- Smooth Aluminum Fenderettes
- Safety Chains with Clevis Hook and Latch
- 1-Piece Aluminum Roof
- 12v LED Exterior Lighting & Slim Line Tail Lights
- 16" Starbright Stoneguard
- Flow-Thru Sidewall Vents
- Rear Ramp Door with Spring Assist
- 32" Side Door with Bar Lock
- 12v Dome Light (2) with Wall Switch
- 500 lb. Surface Mounted Floor Rings (4)
- Ball Coupler Hitch
- 3/4" PlexCore™ Flooring
- Spring Axles with 4" Drop
- E-Z Lube<sup>®</sup> Hubs
- Electric Brakes with Breakaway Kit
- 2" x 6" Tube Main Rails
- 16" OC Vertical Posts
- 24" OC Crossmembers
- 24" OC Tube Roof Bows
- Entire Chassis Undercoated
- 1-Year Limited Warranty



*Trailers shown may feature optional equipment available at additional cost.*



[www.wellscargo.com](http://www.wellscargo.com)

Specifications, features, options, packages & pricing subject to change **without** notice. See your authorized Wells Cargo<sup>®</sup> dealer for more information.